



**ACETECH**  
TOGETHER WE GROW



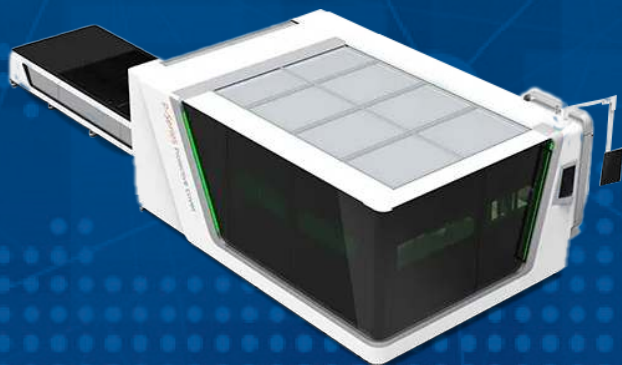
## ABOUT US

Acetech is one of the leading Industrial conglomerate with 2 decades of strong experience endeavoring with the leading OEMs for their requirements of Ferrous & Non Ferrous Steel Fabricated parts, Assembled parts and various Machined parts.

There are a number of aspects which make our services the best in the business which includes the innovative approach, technology advancements and qualified experts. We have the best infrastructure and Technology which always focused on providing world-class services according to our Customers needs.







## FACILITIES

Facilities	AMC - UNIT - 1 Coimbatore	AMC - UNIT - 2 Coimbatore	AHF Chennai	APE Coimbatore
Total Area	3,50,000 Sq. Ft	63,000 Sq. Ft	1,93,668 Sq. Ft	60,000 Sq. Ft
Constructed	1,50,000 Sq. Ft	25,000 Sq. Ft	1,03,500 Sq. Ft	22,000 Sq. Ft
Green Belt	2,00,000 Sq. Ft	38,000 Sq. Ft	42,000 Sq. Ft	38,000 Sq. Ft

## INFRASTRUCTURE

- CNC Fiber Laser - 12 kw / 0.5mm to 40 mm Thickness
- Oxy / Flame - 12mm - 250mm Thickness
- CNC Press Break Machines - 50 Tons - 450 Tons
- CNC Pipe bending Machines -  $\phi$  15 - 76 mm
- NC Rolling Machine - 250 mm - 3000 mm upto 32 mm Thickness
- MIG & TIG Welding Machines - 150+ AWS / ASME Qualified Welders
- Hot Phosphating, Top coat Painting and Powder Coating

## MANUFACTURING CAPACITY

- Weight Range - Few Grams to 20,000 Kgs in Single Piece
- Size Range - Any Geometric Size
- Manufacturing Standards - IS, ASME, JISEN & DIN Standards

## ACCREDITATION







Coimbatore - Light & Medium Fab Components & Assembly

**The Acetech Machinery Components India Pvt Ltd**

SF No. 306, Kadathur Kunnathur Village, Sathy Road,  
Coimbatore - 641107, Tamil Nadu, India.

E: marketingcbe@acetchindia.in

M: +91 98422 56710

Chennai - Heavy Fab, Machine shop & Assembly

**Acetech Heavyfab India Pvt Ltd,**

SF. No. 62/2C, Padurmedu, Poonamallee,  
Chennai - 600 124, Tamil Nadu, India.

E: marketingheavyfab@acetchindia.in

M: +91 98850 68000

Coimbatore - Machine Shop & Assembly

**Acetech Precision Engineering,**

SF. No. 3/6-C1, Telungupalayam Road, Kariyampalayam,  
Coimbatore - 641097, Tamil Nadu, India.

E: precision@acetchindia.in

M: +91 89738 77000

[www.acetchindia.in](http://www.acetchindia.in)